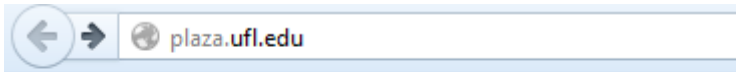


Plaza @ UF

Presented by: David DePatie ddepatie@ufl.edu

Navigate to **Plaza.ufl.edu**



Welcome to plaza.ufl.edu

MyPlaza folder

- ❖ Somewhere on your local computer create a folder called: MyPlaza

FTP client

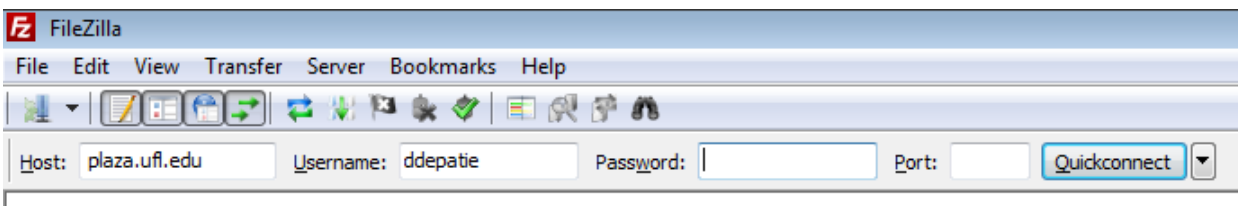
- ❖ As the name suggests, **FTP** is used to transfer files between computers on a network. You can use **FTP** to exchange files between computer accounts, transfer files between an account and a desktop computer, or access online software archives. This is the simplest way to update webpages.

Navigate to **FileZilla-project.org**

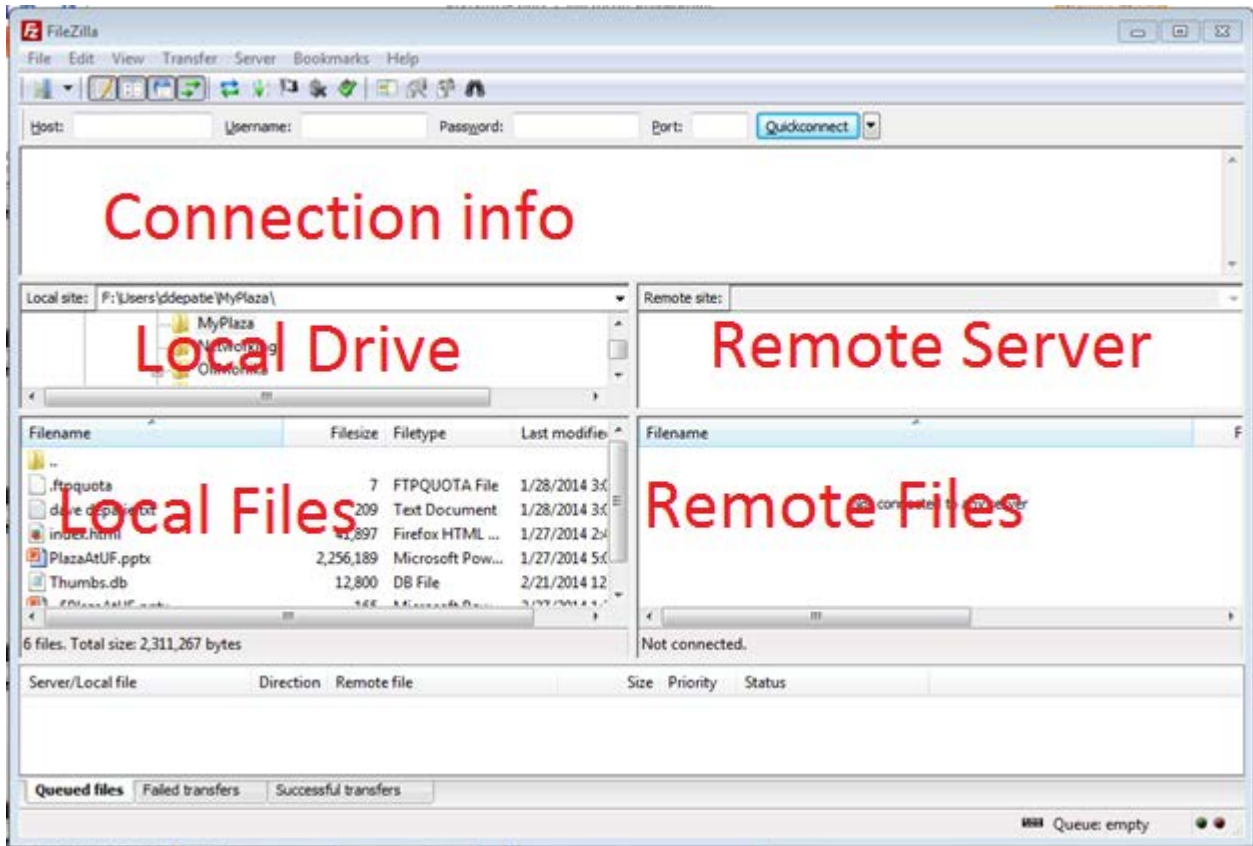


FileZilla - Logon

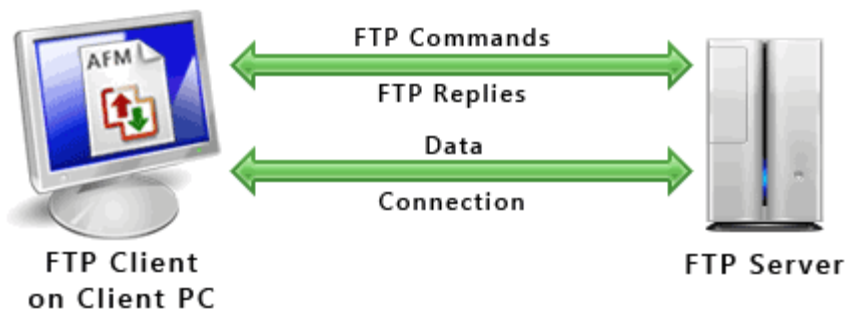
- ❖ HOST - plaza.ufl.edu
- ❖ Username - Your Gator-link & Password
- ❖ CLICK – Quickconnect button



Frame areas:



In the background:



<http://www.deskshare.com/resources/articles/images/ftp-protocol.gif>

Web Editing

<p>1. <u>Adobe Dreamweaver</u></p>  <p>MY FAVORITE CHOICE</p>	<p>2. <u>Adobe Creative Suite Design Premium</u></p> 	<p>3. <u>Microsoft Expression Studio Web Pro</u></p> 
<p>4. <u>Microsoft Expression Studio Ultimate</u></p> 	<p>5. <u>NetObjects Fusion</u></p>  <p>Screen shot by J Kyrnin</p>	<p>6. <u>CoffeeCup HTML Editor</u></p>  <p>CoffeeCup HTML Editor www.coffeecup.com</p>
<p>7. <u>Web Designer Xara</u></p> 	<p>8. <u>Contribute</u></p> 	<p>9. <u>Namo WebEditor</u></p> 
	<p>10. <u>Trellian WebPage</u></p> 	

LINKS from: <http://webdesign.about.com/od/windowshtmleditors/tp/windows-web-editing-suites.htm>

Launch **Microsoft WORD** [We will use a free option for today Microsoft Word (do not tell anyone you do web design this way) we are cheating for this lesson.] Type in the following:

Hi Welcome to YOUR NAME's Web Page

I am a(n) CURRENT TITLE at the University of Florida

You may contact me at YOUR_EMAIL@ufl.edu

My office is located in YOUR CLASSROOM / ROOM NUMBER

To give the page a little style: we will make the top line a heading 1

HTML NOTE: A web page needs to see <h1> heading 1 tag to know that it is a heading with size 1. There are many tags in an HTML file and that is where many get lost in web design.

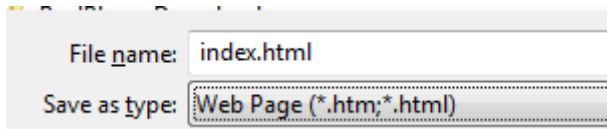
Select the top sentence and then CLICK **HOME** TAB / click HEADING 1

CTRL +S = save / save document

Find your MyPlaza folder

Then name the file **index**

Then scroll the save as type to **Web Page (*.htm, *.html)**



CLICK SAVE button

Just a little feedback why we use a REAL editor: it is to reduce Page WEIGHT – characters and lines of code. Using Microsoft Word we get...

WORD OPTION: [514 lines of code]

```
485 </style>
486 <![endif]--><!--[if gte mso 9]><xml>
487 <o:shapedefaults v:ext="edit" spidmax="1026"/>
488 </xml><![endif]--><!--[if gte mso 9]><xml>
489 <o:shapelayout v:ext="edit">
490 <o:idmap v:ext="edit" data="1"/>
491 </o:shapelayout></xml><![endif]-->
492 </head>
493
494 <body lang=EN-US link=blue vlink=purple style='tab-interval:.5in'>
495
496 <div class=WordSection1>
497
498 <h1>Hi Welcome to David <span class=SpellE>DePatie's</span> Web Page</h1>
499
500 <p class=MsoNormal>I am an instructional Designer at the University of Florida</p>
501
502 <p class=MsoNormal>You may contact me at <a href="mailto:ddepatie@ufl.edu">ddepatie@ufl.edu</a></p>
503
504 <p class=MsoNormal>My office is located in McCarty 1197</p>
505
506 <p class=MsoNormal>Office number: 352.294-7641</p>
507
508 <p class=MsoNormal><o:p>&nbsp;</o:p></p>
509
510 </div>
511
512 </body>
513
514 </html>
515
```

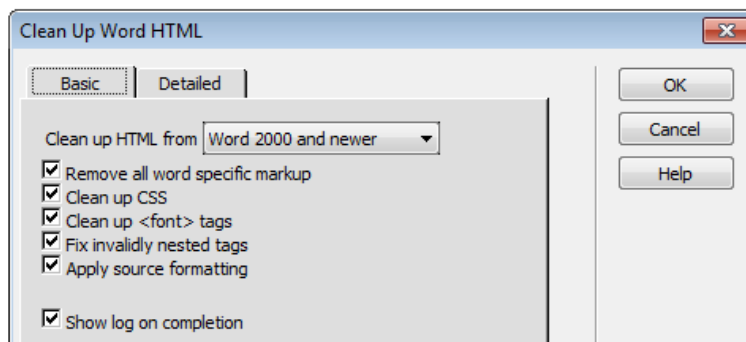
If on the other hand we use Dreamweaver we get...

DREAMWEAVER OPTION: [15 lines of code]

```
1 <!DOCTYPE html PUBLIC "-//W3C//DTD XHTML 1.0 Transitional//EN" "http://www.w3.org/TR/xhtml1/DI
2 <html xmlns="http://www.w3.org/1999/xhtml">
3 <head>
4 <meta http-equiv="Content-Type" content="text/html; charset=utf-8" />
5 <title>Untitled Document</title>
6 </head>
7
8 <body>
9 <h1 style="color: #06F">Hi Welcome to David DePatie's Web Page</h1>
10 <ul>
11 <li> I am an instructional Designer at the University of Florida
12 <li> You may contact me at <a href="mailto:ddepatie@ufl.edu">ddepatie@ufl.edu</a><br />
13 <li> My office is located in McCarty 1197<br />
14 <li> Office number: 352.294-7641</p></body>
15 </html>
16
```

It is so heavy that there is a special tool in Dreamweaver:

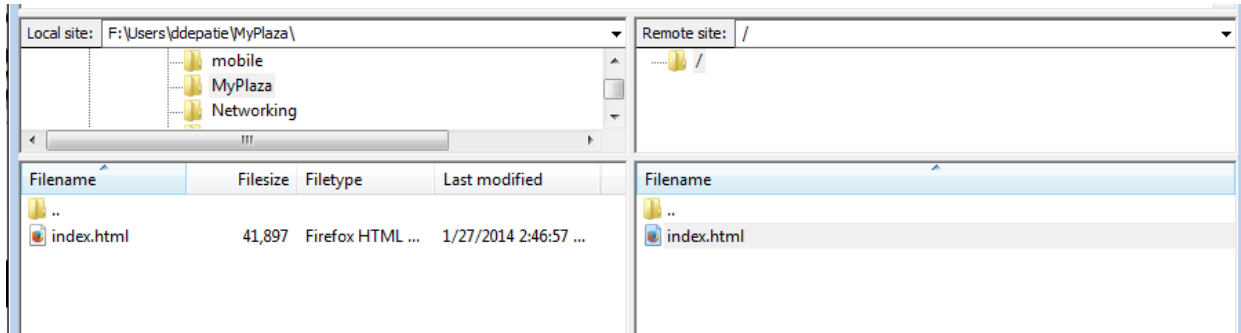
Dreamweaver tool: [Clean up Word HTML]



Now we need to upload our page to the plaza server.

Go back to **FileZilla**

You should see your new file on the left (in the local computer)



To upload a file to the web server **Double Click index.html.**

You should now see the **file on the right pane uploaded to (Remote Server)**

So, to see your new page you will need to go to:

Navigate to ***Plaza.ufl.edu/YourGatorLink***

Plaza.ufl.edu/ddepatie – mine

Have fun creating pages...

One place to learn this process for REAL is Lynda.com

Here is a link to the training site:

Training UF offers to Student and Faculty



<https://shib.lynda.com/Shibboleth.sso/InCommon?providerId=https://login.ufl.edu/idp/shibboleth&target=https://shib.lynda.com/InCommon>