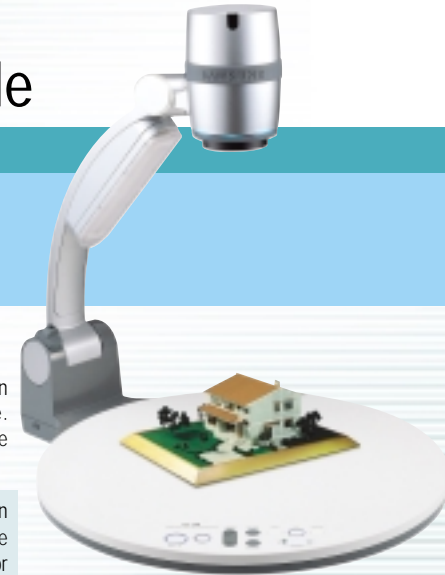




UF-80 DX/ST Quick Start Guide

BASIC OPERATIONS

The Samsung UF-80 DX/ST provides control of the basic operations on the front panel of the Digital Presenter. Please note that you can also access these features via the Remote Control or the PS/2 Mouse by right-clicking on the mouse button to access the menu. Advanced features are found on both the remote and menu commands via the mouse.



▶ **⏻/⏻**

Turn on the main power switch of the document camera. After the boot-up screen, the presenter will perform an automatic white balance or "Color Adjustment."

Tip: Make sure there is no subject matter on the display surface to affect white balance. Printed text on white paper is OK.

▶ **FREEZE**

Use the **FREEZE** button to "hold" any image on the screen while you change your subject or to freeze a subject in any position. To release the **FREEZE** mode, press the **FREEZE** button again or **EXIT** button on the remote control.

Tip: The **FREEZE** button is used to freeze a live image or divided image in order to activate the **Draw** menu command for annotation.

▶ **AWC**

For automatic color adjustment, press the **AWC** button.

Tip: For best results, only activate **AWC** with a white surface under the lens.

▶ **AF**

Pressing the **AF** button will activate an auto focus adjustment at any time. Manual focus is available on the remote or menu via the mouse.

Tip: Use the mouse and the built-in menu command for extremely accurate manual focus control...especially good for 3-dimensional subjects when at maximum zoom.

▶ **LAMP**

Select a proper lighting source with the **LAMP** button of the presenter. Pressing the **LAMP** button turns the upper lamp on or off.

Tip: Use the upper lamps for documents and other subjects. Use the SLB-80 Lightbox to illuminate overheads, X-rays, and slides.

▶ **ZOOM**

Press the **ZOOM** or **ZOOM** settings to reduce or enlarge the image size.

Tip: Make sure you're not moving the subject during auto focus. If the subject is blurry, press the **AF** button to re-focus.

Note: If you save an image when in the Digital Zoom mode, the UF-80 will only save the maximum optical zoom image (14x) to maintain overall image quality.

▶ **INT/EXT**

Use this to switch between internal or external images.

INT : to view the image from the UF-80.

EXT : to view the VGA output from another source such as a personal computer connected to the VGA input of the presenter.

▶ **BRIGHT**

Press the **BRIGHT** button on the control panel to lighten the overall image.

Press the **BRIGHT** button on the control panel to darken the overall image.

Tip: When displaying a glossy document, turn off the upper lamp and adjust the brightness to obtain the desired result.

▶ **ROTATE (DX)**

press the **ROTATE** button. to rotate the image in 90°, 180°, 270°, 0° increments.

▶ **TXT/IMG (ST)**



Press the **TXT/IMG** button to control the sharpness of the output image.

TXT : For a material with mostly words.

IMG : For a material with mostly image.





UF-80 DX/ST Quick Start Guide

ADVANCED FEATURES



This section will cover additional features found on the Samsung UF-80 DX/ST including Image Save & Recall, 3x3 Mode, Image Divide, Annotation, and Preset functions. These advanced features are available from the Remote Control and the Menu commands via the Mouse.

Image Save (DX only)

Up to 8 full-size images can be saved to internal memory of the Samsung Digital Presenter. This feature allows the presenter to quickly save images for review at the end of a class or meeting or for download to a personal computer. These controls are located at the base of the remote. Press the **SAVE** button and select a number between **1** and **8** on the remote as the storage position. If you wait too long to select a number, the screen display will disappear. If this occurs, start the process again by selecting the **SAVE** button.

Images can be "over-written" by the same process.

- Tip:**
- Images will be lost if the unit is turned off. If you want to save any of the stored images, download them via the USB cable and software to your Windows or Macintosh computer.
 - Use this feature to create "bullet points" during your presentation

Image Recall & Scan (DX only)

To view any of the stored images, select the **RECALL** button at the bottom of the Remote control, then select a number from **1** to **8** to instantly view that image. Hold the Recall button down to Scan through the stored images in order.

Image Divide (DX only)

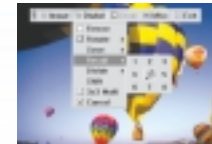
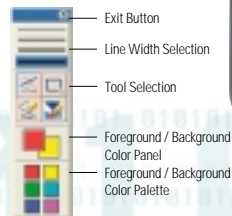
Any stored image can be divided on screen with a live image...a great tool for comparative analysis of any subject matter. First make sure that you have stored an image that you would like to divide. Next, press the **DIVIDE** button and select the image to divide by entering the number where it is located. You'll see the image appear on the left side of your display. The right side of the display is live, allowing you to adjust all the settings to your liking.

Image Shift (DX only)

Once an image has been divided, you may need to "shift" that image to show the portion you would like to view. Press the **SHIFT** button to cycle the image in 1/3 increments to your desired location.

Annotation

By using the mouse and the pull down menu, any image may be annotated. To access the **Draw** portion of the menu, either "Freeze" a live or divided image, or recall a stored image. Do this by pressing the **FREEZE** button on the front panel, remote or menu. Click on the **Draw** menu to open the annotation tool box shown below. Select the desired line width, tool...either a straight line, box, freehand, or eraser, and up to 6 colors. Left or right click the mouse while drawing to use the Foreground or Background color. Left or right click on the Color Palette to change colors.



Tip: To quickly exit from the **Draw** screen, press **EXIT** on the remote control to return to a live display.

Note: Annotated images cannot be saved to a personal computer.

3x3 Mode (DX only)

You can see all the images saved in memory simultaneously on one screen and choose one to display it.

▶ Press the **3x3** button for 2 seconds or more, then all the images saved in memory are displayed on the screen.

▶ To cancel this mode and return to normal mode, press **EXIT** button.

Tip: You can also use the mouse to click on an image to view it. This also activates the menu feature.

■ Clicking on the center pane in the 3x3 Mode will allow you to jump to a live image.

Presets

Up to 4 User-defined presets can be stored allowing the presenter to quickly jump to any pre-determined setting. First, adjust all your settings for the desired result including zoom, lamp state, brightness, focus, etc.

▶ Save the settings by pressing the **SAVE** button and selecting a memory location within 4 seconds using the number keys from **1** through **4**.

▶ To recall your custom setting, press the **ACTIVE** button and press the memory location number within 4 seconds.

Note:

- All Preset functions including the setting for Text and image modes will be saved even if the unit is powered down. However, any stored image will be lost if the unit is turned off.
- You can not save the setting on the **FREEZE**, **RECALL**, and **DIVIDE**, **SHIFT** and **ROTATE** functions.